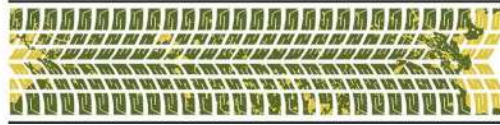


THE TYRED FLOORING COMPANY



DINOMAT INSTALLATION / MAINTENANCE GUIDELINES

1/2" DINOMAT

3/4" DINOMAT



Fitness Centers



Ice Arenas

The following pages are guidelines only... please read this manual thoroughly before installing THE TYRED FLOORING COMPANY Rubber Surfacing products.

TABLE OF CONTENTS

<u>SECTION</u>		<u>PAGE</u>
PRODUCT		
I	MATERIAL STORAGE & HANDLING	3
II	TOOLS & ACCESSORIES	3-4
INSTALLATION		
III	SUB-FLOOR PREPARATION	4-5
IV	INSTALLATION LAYOUT	5
V	CUTTING DINOMAT TILES	5
VI	INSTALLATION OF DINOMAT TILES	5-6
MAINTENANCE		
VII	GENERAL CLEANING & MAINTENANCE	6
GENERAL		
VIII	WEIGHTS & MEASURES	7

SECTION I

MATERIAL STORAGE & HANDLING

General packaging information

The DINOMAT products are packaged on wooden pallets, covered with black plastic and secured by steel strapping.

On receipt of merchandise:

A) We recommend that you double-check that your order is correct, that no damage occurred during transport, and for any other possible shortcomings. For your own protection, ensure that defective product is identified prior to the start of the installation. Please note that we are not responsible for any installation costs that occur as a result of defective product being installed.

B) If adhesives were exposed to freezing temperatures, place indoors and bring to room temperature before using. Read technical data sheets and material safety data sheets for adhesive. Check adhesive cans for damage that may have occurred during transit.

C) Storage: Dinomats should be stored flat, and under no circumstances should the matting be left bent, folded, stepped on, or crushed, as this may destroy the matting. Prevent damage or contamination to materials by water, moisture, freezing, excessive heat, foreign matter or other causes.

D) Installation: Dinomats must be stored on site with the adhesives, and required accessories etc., minimum 48 hours prior to installation. (Extreme cold or hot conditions may require additional time.)

Avoid exposure to direct sunlight to prevent potential damage from UV rays.

Rubber Flooring materials are susceptible to dimensional changes due to temperature and climate conditions, so it is vital that site temperatures remain constant within the acceptable working range.

SECTION II

TOOLS & ACCESSORIES

A) Tools and safety equipment required:

- THE TYRED FLOORING COMPANY Installation Guidelines
- Rubber gloves
- Safety glasses
- Measuring tape
- Heavy duty sharp utility knife & extra blades
- Carpenter's square
- Transit level and Straight edge
- Concrete blocks for weighting down irregular areas
- Chalk snap-line
- Markers to indicate cut measurements
- 2" wide masking tape for securing seams
- Kraft paper to protect flooring from concrete blocks
- Drill and mixer for adhesive
- Square-notched trowel 3/32" (2.4 mm)

B) Reducer strips

Sizes:

- 1/2" (12 mm)
- 3/4" (20 mm)

Available in black solid core and 12ft lengths.



1/2" side view
(12 mm)



3/4" side view
(19 mm)

Attach reducer strip to mats with compatible, non-solvent based adhesive or caulking.

C) Adhesive

THE TYRED FLOORING COMPANY recommended adhesive:

1) Chemrex Urethane 941 (v.o.c. compliant)

- One component polyurethane adhesive
- 2 gallon pail: 26 lbs (12 kg)
- approximate coverage: 130 sq.ft. (12 m²) per pail

2) Chemrex Urethane 941 (V.O.C. compliant)

- One component polyurethane adhesive
- 5 gallon pail: 57 lbs (26 kg)
- approximate coverage: 325 sq.ft. (30 m²) per pail

3) Chemrex Urethane 948 (V.O.C. compliant)

- One component polyurethane adhesive
- 313 ml gun grade: 2 lbs (10 oz tube)
- approximate coverage:
 - 1/8" (3mm) bead = 90 lineal feet
 - 5/16" (8mm) bead 11 lineal feet



It is not uncommon for a moisture cured urethane product, such as Chemrex CX941, to develop a slight skin on the top surface of the product. The slight skinning can be the result of product getting older, or in the case of newer product, perhaps a poor seal in the lid. Regardless, the product is still good; simply trim the skin and discard. In the case of older product, a thicker skin may have developed, and the viscosity of the overall product may have thickened, also making the application a bit more difficult, but in most cases will still perform.

BASF Technical Support

For detailed information and product use, refer to BASF Product Data Guide, included with adhesive.

SECTION III

SUB-FLOOR PREPARATION

The installation of any resilient rubber flooring is only as good as the sub floor it is laid upon. This is especially true when the flooring is glued down. Rough and uneven sub-floors can diminish the appearance and shorten the life span of such flooring. We therefore recommend proper preparation of such sub-floors as follows:

A) Wood Floors

- New wood sub floors should be CDX exterior smooth one side.
- All nails must be caulked and surface sealed with epoxy sealant.
- Plywood should be acclimatized for a 48-hour period prior to installation of the rubber flooring.
- All wood sub floors must be clean and dry of all dust, dirt, and other materials.
- Any cracks, holes, and rough or uneven areas should be patched with good quality cement based leveling compound such as Mapei Planipatch and Planipatch-Plus.

B) Concrete Floors

- The sub floor must be smooth and level. Irregularities in many cases will telegraph through resilient flooring materials.
- Any wax, paint varnish, old adhesive, etc. should be completely removed.
- Existing concrete sub floors must be clean, dry and smooth. The sub floor must be prepared to provide proper bonding for the adhesive to be used.
- New concrete floors should be cured at least 4 weeks prior to installation (some floors need longer). See moisture test information below. Old concrete floors must be prepared as per above instructions.

It is vital that a moisture test be completed prior to floor installation, and that sub floors are cured and dry to acceptable levels. Moisture is the single most significant factor that causes bonding failure to the sub floor.

Moisture Tests

There are two types of acceptable moisture tests:

1. The Poly File Test:

Tape down a sheet of plastic over a section of the floor. Wait 72 hours. Then look for moisture droplets under the plastic sheet.

2. The Calcium Chloride Test

A quantitative test requiring no more than 3 lbs max. moisture emissions per 24 hours per 1000 sq ft.

SECTION IV

INSTALLATION LAYOUT

- Before work commences, examine the areas to be covered and report any flaws or adverse conditions to the general contractor and /or architect. Do not proceed with installation of Dinomat tiles until substrates and conditions comply with the requirements indicated in manufacturer's instructions.
- Remove mats from pallets and spread throughout the installation area to allow them to relax and acclimatize on the floor for 48 hours (minimum) prior to installation.
- Visually inspect all mats for visible defects. Any mats found to have visible defects must be set aside, to be used for custom cut locations where possible, or to be returned to manufacturer. Notify dealer immediately with information of any defects found.

THE TYRED FLOORING COMPANY will not provide warranty coverage for any Dinomat tiles which have been installed with previously identified visible defects.

Room temperatures for installation must be maintained at a minimum 15 C degrees (60F) to a maximum 30 C degrees (85F) and a relative humidity 65% or less for at least 48 hours before installation. These conditions must be maintained 24 hours per day for the duration of the installation and for a minimum of 72 hours after installation is completed.

SECTION V

CUTTING DINOMAT TILES

- Dinomat tiles can be cut with a utility knife or similar type of cutter using a straight edge or square as a guide.
- To ensure proper cuts at seams, repeat passes of the knife should be used. Round holes can be cut using a hole saw or fine tooth jigsaw.
- To ensure tight seams, slightly bevel the cuts at seams so that when joined, no gaps appear.
- Due to the resilient nature of rubber, Dinomat tile dimensions are susceptible to expansion and contraction which can be affected by heat, humidity, site conditions, and amount of time the mats have been allowed to acclimatize on site. Every precaution in manufacturing is utilized to ensure consistent mat size; however, some on-site trimming may be required to ensure proper fit and alignment.

SECTION VI

INSTALLATION OF DINOMAT TILES

Note: Install mats with "Made in Canada" side down.

Note: Dinomats are manufactured in a mold that requires a mold release agent. Therefore, prior to applying the adhesive at installation, a light sanding on the back of the mat is required to remove the mold release agent.

- Dinomat tiles can be installed in either a loose-laid or glued down application.
- Adjoin factory edge to factory edge of Dinomat tiles. Where possible, cut edges should adjoin walls or other vertical surfaces.
- The floor area should be squared by locating the mid-point of the room and chalking a start line down the center of the room. Chalk another similar start line 90 degrees and square to the first one. Begin mat installation from the point where the two chalk lines intersect.

- Loose-laid installations are by owner's choice over hard surface subfloors only, and gaps between tiles may develop as mats can shift with use. Shifting of mats can be minimized with the use of "double-sided" tape strips applied under the mats around the perimeter of the installation, and under several mats within the installation.
- For glued down applications, begin spreading adhesive from the intersection of the chalk lines, and continue down the line in one direction, spreading enough adhesive to install one starting row of mats. Ensure that all joints between Dinomat tiles are kept tight.

All seams between mats should be secured to prevent gaps, by using blue painter's tape applied across the seams onto adjoining mats (Typically 12" long at 16" spacing intervals.)

- Continue to spread adhesive and install mats in each direction from the first row of mats, and make any cuts required to fit up to and around walls and protrusions.
- Dinomat tiles should be laid into fresh adhesive in small sections and rolled in both directions with the sectional roller within 15 minutes to ensure proper transfer of adhesive to back of the mats. Mats at any irregular or sloped surface (i.e., around drains) should be weighted with bricks to ensure proper bonding of flooring to adhesive.
- Any excess adhesive appearing on the top surface of the mats should be immediately wiped clean with a soft rag soaked in denatured alcohol. (Note: excess adhesive which is allowed to harden on the top surface is nearly impossible to remove without marring the mat finish.)
- No traffic should be allowed on Dinomat tiles for a 24-hour period after installation.

Note: In ice arena applications, minimum ½" Dinomat tiles to be used, and minimum ¾" Dinomat tiles in players' boxes.

Proceed with recommended maintenance.

SECTION VII

GENERAL CLEANING & MAINTENANCE

Initial cleaning after installation

- Wait 48 hours after installation before proceeding with floor maintenance.
- Sweep matting to remove all loose dirt and debris.
- Do only small areas of floor at a time.
- Using a damp mop (not soaking wet) apply a light PH neutral detergent diluted with water.
- If it is required to remove the mold release agent, use a non-alkaline floor finish stripper diluted with water mixed to manufacturers' suggested mix ration.
- Scrub the damp floor using a rotary buffing machine equipped with a medium 'Scotch Brite' pad, and immediately extract damp residue with a wet/dry vacuum.
- Rinse with clean water and mop and repeat extraction/drying method.
- Stay off floor until area is dry.

Recommended cleaner is Diversey "Profi" or similar product.

Floor Finish

Dinomat tiles do not require a finish, however, if a finish is desired we suggest Diversey "Wiwax" or a similar material. An applied finish may alter the surface characteristic of the mat.

Regular Maintenance

Dinomat tiles may be cleaned at any time using a damp mop with a PH neutral cleaner diluted with water, and immediately extract any moisture.

Precautions:

Dinomat tiles must not be cleaned with any petroleum based cleaner. If any petroleum fuels are spilled on the matting, it should be removed immediately to avoid damage to the matting and voiding of warranty.

SECTION VIII

WEIGHTS & MEASURES

General packaging information

THE TYRED FLOORING COMPANY products are packaged on wooden pallets, covered with black plastic and secured by steel strapping.

Product Information - Dinomat Tiles

Thickness and dimension tolerance:

$\frac{1}{2}''$ (12mm) \pm 1.6 mm

$\frac{3}{4}''$ (19mm) \pm 1.6 mm

Dimensions

48" x 72" (4' x 6') = 24 ft²

1219 mm x 1829 mm = 2.23 m²

Thickness:		Typical wt. per tile:		Tiles per pallet:
1/2''	12 mm	70 lbs	32 kg	50
3/4''	19 mm	105 lbs	53 kg	25

Pallet (net weight) **75 lbs** (34 kg)

Conversion Chart:

1 in = 2.54 cm

1ft = 30.5 cm

39.4 in = 1.00 m

2.2 lbs = 1.0 kg

Weights and measures may change without notice. All measurements are nominal and subject to variation.

DISCLAIMER

The installation guidelines in this manual represent typical installation work procedures. Every site is different and THE TYRED FLOORING COMPANY does not claim to have covered all possible circumstances. THE TYRED FLOORING COMPANY does not warrant installation work and specifically disclaims liability for any direct or indirect personal injury, property damage, and other costs or losses resulting from installations or applications by third parties. Please see the THE TYRED FLOORING COMPANY Warranty for the particulars of warranty coverage relating to THE TYRED FLOORING COMPANY's products.